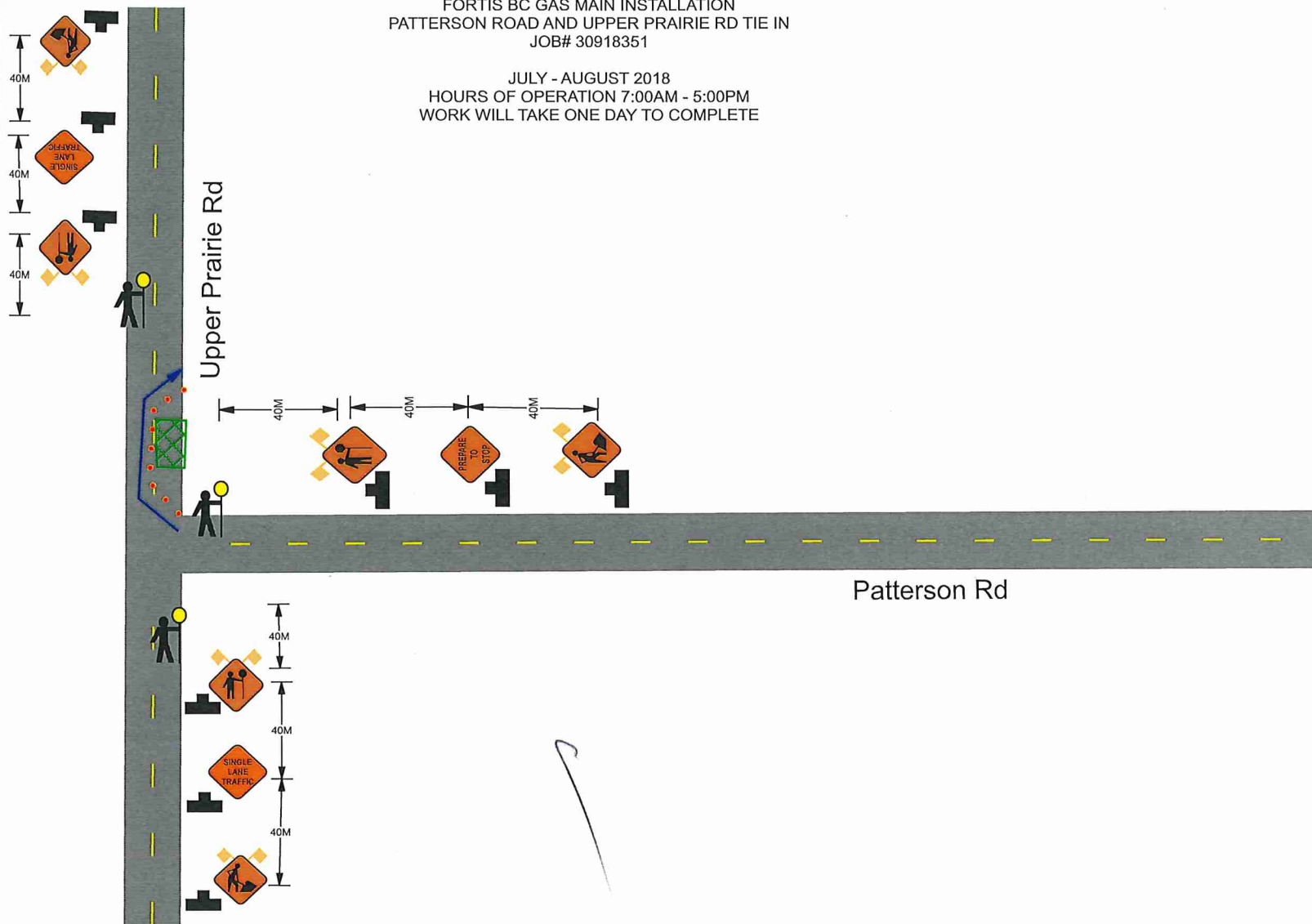




CANADIAN UTILITY CONSTRUCTION
 FORTIS BC GAS MAIN INSTALLATION
 PATTERSON ROAD AND UPPER PRAIRIE RD TIE IN
 JOB# 30918351

JULY - AUGUST 2018
 HOURS OF OPERATION 7:00AM - 5:00PM
 WORK WILL TAKE ONE DAY TO COMPLETE



Patterson Rd

Upper Prairie Rd

- LEGEND**
- DIRECTION TRAFFIC FLOW
 - TUBULAR MARKERS
 - WORK AREA
 - SIGN STANDS
 - TRAFFIC CONTROLLER
 - BUS STOP

NOTE:

- ALL SIGNS WILL BE PLACED ON WINDMASTERS WITH FLAGS
- TRAFFIC CONTROL WILL ASSIST WITH PEDESTRIANS
- ALL SIDEWALKS - CROSSWALKS - BUS STOPS WILL REMAIN OPEN

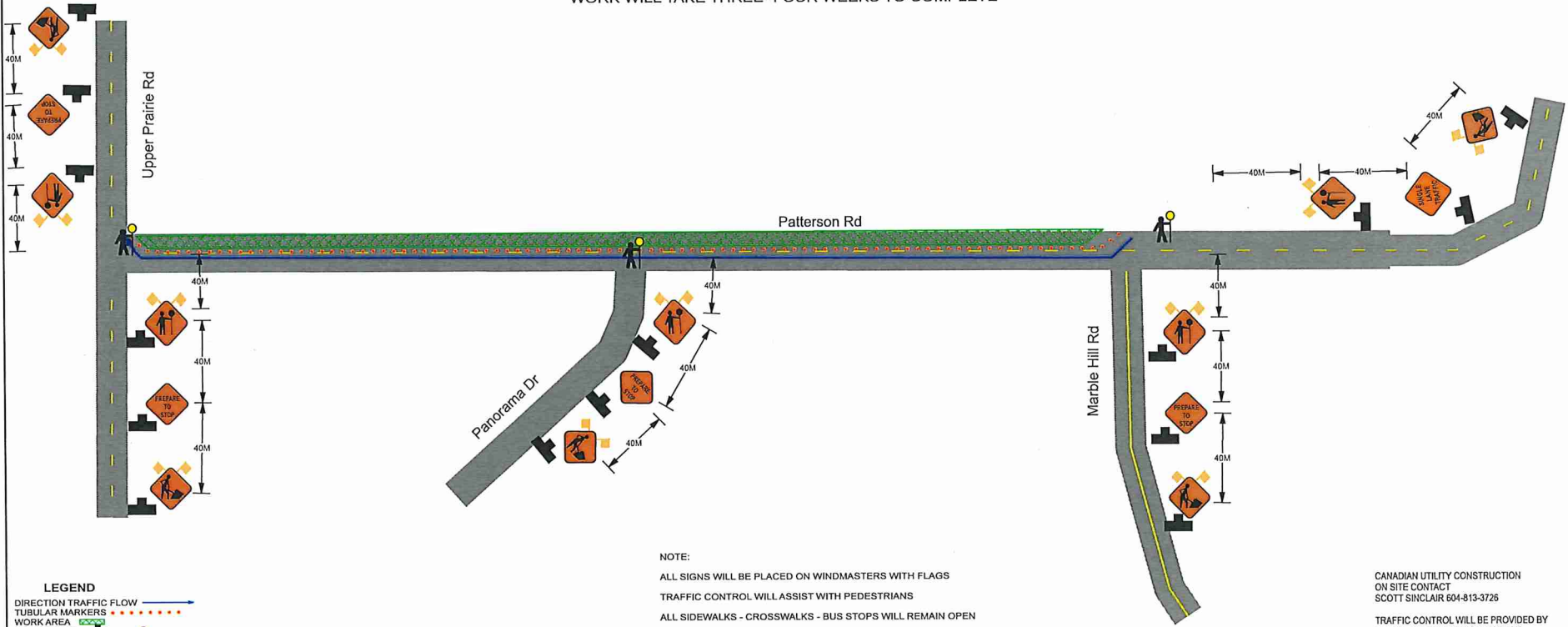
CANADIAN UTILITY CONSTRUCTION
 ON SITE CONTACT
 SCOTT SINCLAIR 604-813-3726

TRAFFIC CONTROL WILL BE PROVIDED BY
 CANADIAN UTILITY CONSTRUCTION
 MICHELLE PARKS 604-313-5796



CANADIAN UTILITY CONSTRUCTION
 FORTIS BC GAS MAIN INSTALLATION
 PATTERSON ROAD - FROM MARBLE HILL RD TO UPPER PRAIRIE RD
 JOB# 30918351

JULY - AUGUST 2018
 HOURS OF OPERATION 7:00AM - 5:00PM
 WORK WILL TAKE THREE- FOUR WEEKS TO COMPLETE



NOTE:
 ALL SIGNS WILL BE PLACED ON WINDMASTERS WITH FLAGS
 TRAFFIC CONTROL WILL ASSIST WITH PEDESTRIANS
 ALL SIDEWALKS - CROSSWALKS - BUS STOPS WILL REMAIN OPEN

CANADIAN UTILITY CONSTRUCTION
 ON SITE CONTACT
 SCOTT SINCLAIR 604-813-3726
 TRAFFIC CONTROL WILL BE PROVIDED BY
 CANADIAN UTILITY CONSTRUCTION
 MICHELLE PARKS 604-313-5796

LEGEND
 DIRECTION TRAFFIC FLOW →
 TUBULAR MARKERS
 WORK AREA
 SIGN STANDS
 TRAFFIC CONTROLLER
 BUS STOP